

4-H Ring Procedure

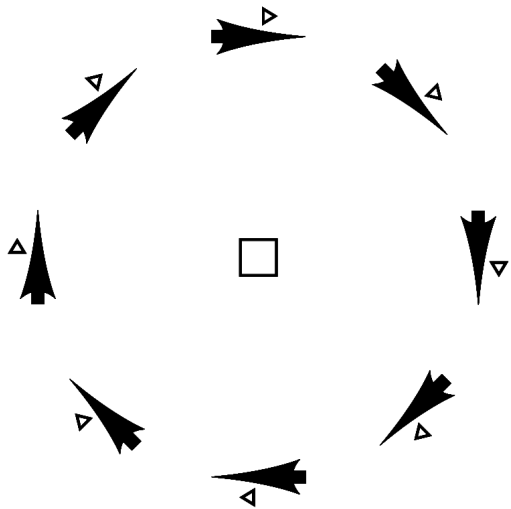


Figure 17-2 Leader is on the left side when the judge is in the

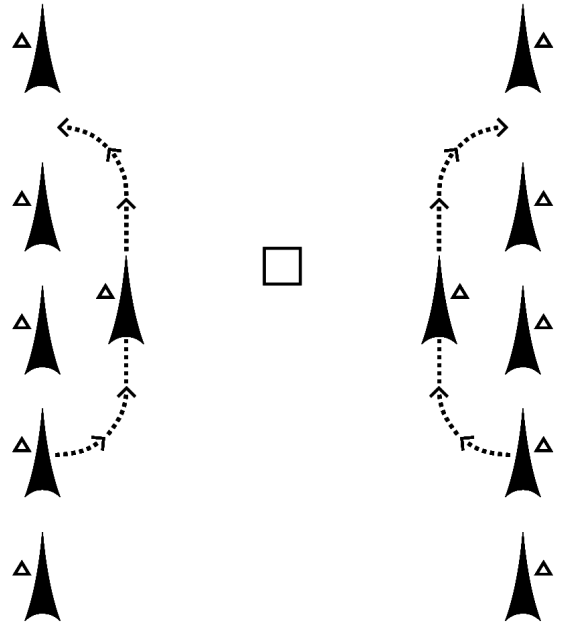


Figure 17-5 Procedure for changing placing in a lineup standing head-to-tail.

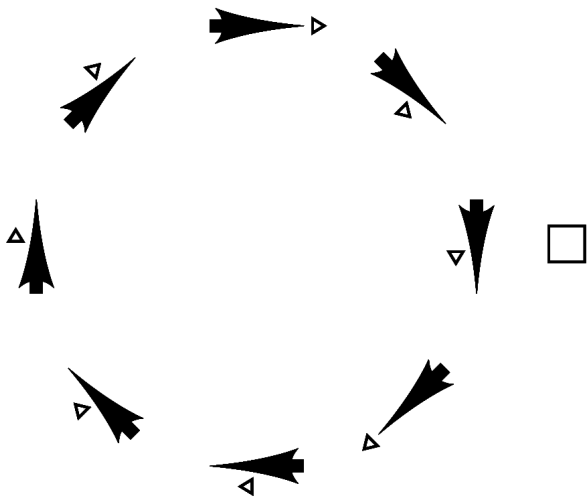


Figure 17-3 When the judge is outside the showing, the leaders are on the right side of their dairy goats part of the time.

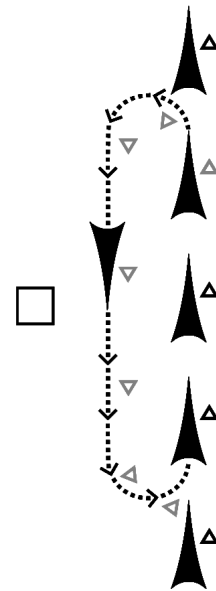


Figure 17-6 To move down in position in a head-to-tail line, move forward, make a left turn down and parallel to the line, making another left turn when even with the dairy goat behind position to be taken over. Numbers 3 and 4 move straight ahead to make room for exhibitor to move into line.

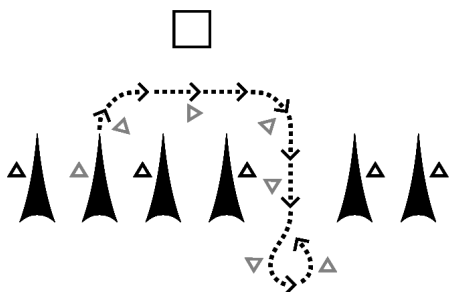


Figure 17-4 Procedure for changing placing in a lineup standing side-by-side.